

Inside this issue

President's Message	2
Co-editors' Messages	3
Notes from the Editor Emeritus: Francisco Jimenez, MD.....	5
Complications & Difficult Cases: Hair Transplantation on a Patient with a Large Cranioplasty.....	8
FUE Donor Site Ischemia and Necrosis.....	12
How I Do It: The "Sweet Spot" for Strip Harvesting.....	14
Meetings & Studies: Day-by-day Review of the 21st ASM.....	15
21st ASM Meeting Highlights.....	22
Message from the 2014 ASM Program Chair	29
Message from the 2014 ASM Surgical Assistants Program Chair	29
Regional Societies Profiles: ISHR	30
Hair's the Question: Recipient Sites: BASIC Questions.....	31
Obituary: Dr. Neil F. McLeod.....	33
Cyberspace Chat: To Dye or or Not to Dye	34
Review of the Literature.....	36
Classified Ads	38

Concepts and Challenges in Hair Follicle Cloning

Claire A. Higgins, PhD, Department of Dermatology, Columbia University New York, New York, USA
ch2609@cumc.columbia.edu; and Colin A.B. Jahoda, MD, PhD, School of Biological and Biomedical Sciences,
Durham University Durham, UK colin.jahoda@durham.ac.uk *The authors declare no conflict of interest.

Introduction

It was shortly after World War II that Lille and Wang first demonstrated that feather follicle development is dependent on mesenchymal-epithelial interactions.¹ Mechanisms underlying follicle development are reprised in the development of other appendages, and so these observations by Lille and Wang paved the way for advances in the field, in particular regarding the recognition that all hair follicle development and adult activities are regulated by interactions between the mesenchyme and the epithelium. Later on, Oliver was the first person to demonstrate that rodent mesenchyme-derived papilla, when isolated from the follicle, can initiate these interactions and induce new hair follicle growth in adult skin.² Since this, a multitude of experiments have demonstrated that both intact papilla and also cultured papilla cells are capable of inducing de novo hair growth not only in skin, but several other types of epithelia.³ Interestingly, one other striking behaviour of cultured rodent whisker papilla is their propensity to aggregate, both *in vitro* and after subdermal injection.⁴ Cultured rat dermal papilla cells are capable of self-aggregating to form condensate-like clumps, while we have never observed this aggregation phenomenon after injection of human cells into the skin.

Dichotomy of Activity Between Hair Follicle Dermis and Interfollicular Skin

We have previously proposed that dermal papilla, sheath, and fibroblasts are not in a steady state within the skin.⁵ Moreover, there is experimental evidence supporting the lack of a steady state between the papilla and sheath cells during the follicle cycle.⁶ We believe that hair follicle dermal cells may have an additional role in skin, acting as wound healing fibroblasts in the context of skin injury or trauma.⁷ This idea is supported largely by the observation that hair follicle dermal cells assume different roles after cell culture. Once in culture, hair follicle dermal cells can act as mesenchymal stem cells and differentiate down a variety of mesenchymal lineages.⁸ This raises the question of whether cultured hair follicle dermal cells will act as hair follicle cells, or in another capacity, when transplanted back into the skin for the purpose of hair follicle regeneration.

Strategies for Targeting Follicle Regeneration

For several years, researchers have been trying to exploit the inductive potential of the dermal papilla and demonstrate that human dermal papilla cells hold the same inductive properties as rodent cells.⁹ To this effect, there are currently two experimental strategies that utilise hair-associated dermal cells for follicle regeneration. The first of these involves injecting cultured dermal cells into the dermis, where it is hypothesized that they will augment existing follicles, and transform a vellus follicle to a terminal fate by contributing to, and enlarging the size of the dermal papilla. This is supported by observations that the size of the dermal papilla is directly related to the size of the hair fibre produced.¹⁰ The second strategy involves injecting or grafting hair follicle dermal cells so they are in contact with skin epithelium, where it is proposed they will initiate mesenchymal-epithelial interactions to instruct new follicle growth. By and large, these experiments have been unsuccessful, and to understand this, we have to go back and look at the behaviour of human hair follicle dermal cells when compared to their rodent counterparts (Figure 1). In the absence of spontaneous aggregation by human papilla cells, they may be behaving as fibroblasts in what is essentially a wound environment after their injection or grafting. Coupled with their loss of specificity by culture, hair follicle dermal cells will not necessarily incorporate into a hair follicle, but rather will contribute to the surrounding interfollicular tissue.

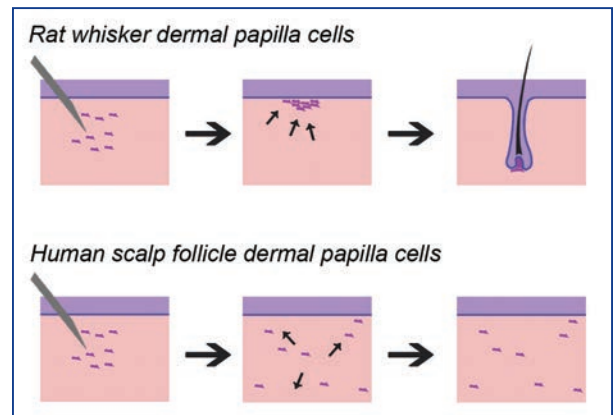


Figure 1. Cartoon illustrating differences between rat and human dermal papilla cells. After injection into skin dermis, cultured rat whisker dermal papilla cells have a propensity to aggregate, while human cells often act in an opposite manner and disperse. The aggregation of rat dermal papilla cells enables them to initiate epithelial-mesenchymal interactions, resulting in the growth of de novo follicles in specific sites.

SAVE THE DATE!

